

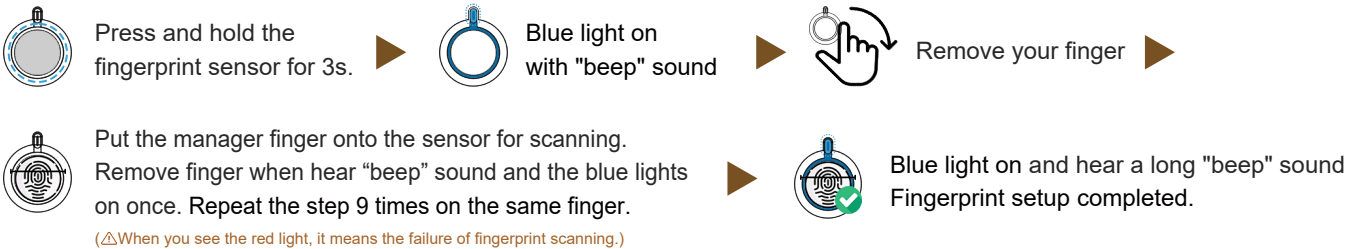
FEATURE

When the padlock stays unlocked, press the lock shackle to locked.

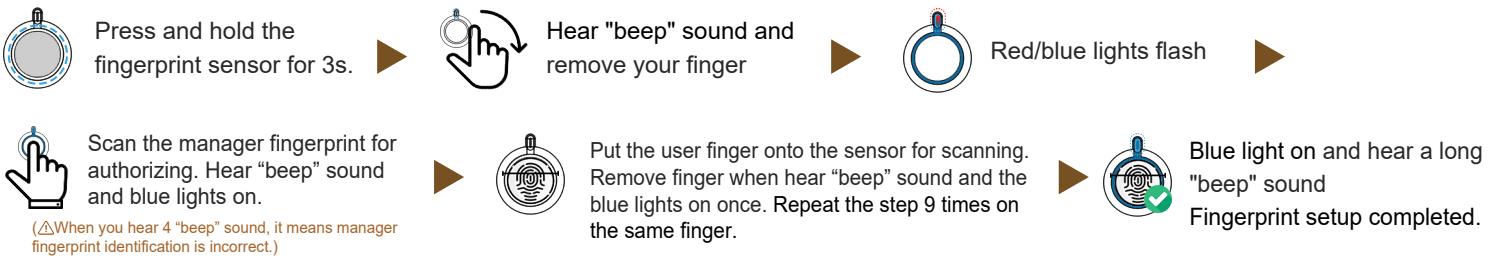
MANAGER :The first and second registered fingerprints are manager fingerprint which can authorize to set up or reset.

USER :The rest of eight fingerprints are registered by user.

SET UP FIRST MANAGER FINGERPRINT



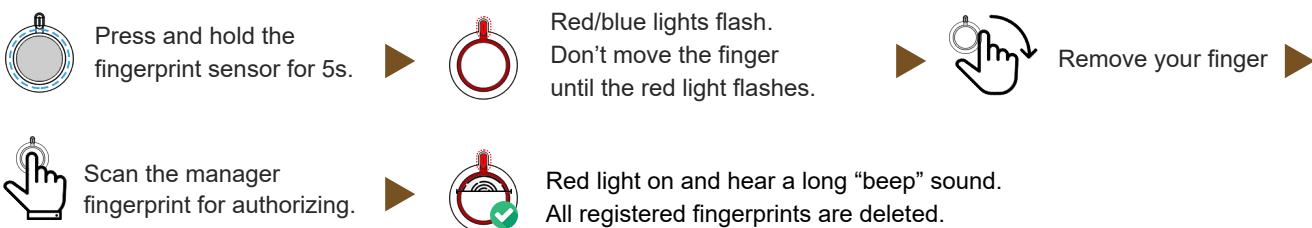
SET UP NEW FINGERPRINT



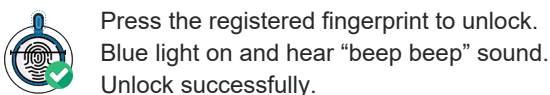
△ Fingerprint full status:

If the fingerprint capacity is full, the system will exit with red light on and 4 "beep" sounds after the manager fingerprint is pressed.

DELETE FINGERPRINT (INITIALIZATION)



UNLOCK



BATTERY CHARGING



NOTE

Any finger can touch to unlock if no fingerprint registered.