

美标转国标直流充电适配器

CCS1 to GB/T ADAPTER

OWNER'S MANUAL



COMMUNICATIONS REGULATIONS

RADIO AND TELEVISION INTERFERENCE

The equipment described in this manual can generate and radiate radio-frequency energy. If it is not installed and used properly, and in accordance with our instructions, it can interfere with radio and television reception.

COMPLIANCE

The COMBO 1 Adapter complies with the following European Union directives: Low Voltage Directive (LVD) 2006/95/EC and Electromagnetic Compatibility (EMC) Directive 2004/108/EC.

Protocol comply with DIN70121/ISO15118 and 2015 GB/T 27930

ERRORS OR OMISSIONS

To communicate any inaccuracies or omissions in this manual, please send an email to your local reseller.

通信规程

无线及电磁干扰

本说明书中所描述的装置有可能产生无线电磁波的干扰，如果没遵从本说明书中的正确使用原则，有可能对无线电视，广播造成干扰。

遵从标准

本适配器遵守欧盟电磁干扰标准（LVD）2006/95/EC 及（EMC）2004/108/EC

通讯协议遵从 DIN 70121 / ISO 15118 及 2015 GB/T 27930

错误及遗漏

如阁下发现本手册有任何错误或者遗漏之处，请发邮件通知您所在地的经销商

SAVE THESE IMPORTANT SAFETY INSTRUCTIONS. This document contains important instructions and warnings that must be followed when use the adapter

使用该转换器之前，



WARNINGS

- Read this document before using the COMBO 1 Adapter . Failure to follow any of the instructions or warnings in this document can result in *fire, electrical shock, serious injury or death*.
- The COMBO 1 Adapter is designed only for charging a gb/t vehicle (China charging standard car). Do not use it for any other purpose or with any other vehicle or object. The COMBO 1 Adapter is intended only for vehicles that do not require ventilation during charging.
- Do not use the COMBO 1 Adapter if it is defective, appears cracked, frayed, broken or otherwise damaged, or fails to operate.
- Do not attempt to open, disassemble, repair, tamper with, or modify the COMBO 1 Adapter. The adapter is not user serviceable. Contact the reseller for any repairs.
- Do not disconnect the COMBO 1 Adapter while charging the vehicle.
- Do not use the COMBO 1 Adapter when either you, the vehicle, the charging station, or the COMBO 1 Adapter is exposed to severe rain, snow, electrical storm or other inclement weather.
- When using or transporting the COMBO 1 Adapter, handle with care and do not subject it to strong force or impact or pull, twist, tangle, drag or step on the COMBO 1 Adapter to protect from damage to it or any components.
- Protect the COMBO 1 Adapter from moisture, water and foreign objects at all times. If any exist or appear to have damaged or corroded the COMBO 1 Adapter, do not use the COMBO 1 Adapter.
- Do not touch the COMBO 1 Adapter's end terminals with sharp metallic objects, such as wire, tools or needles.



WARNINGS Cont'd 警告

- If rain falls during charging, do not allow rainwater to run along the length of cable and wet the COMBO 1 Adapter or the vehicle's charging port.
- If the COMBO 1 charging station's charge cable is submerged in water or covered in snow, do not insert the COMBO 1 Adapter's plug. If, in this situation, the COMBO 1 Adapter's plug is already plugged in and needs to be unplugged, stop charging first, then unplug the COMBO 1 Adapter's plug.
- Do not damage the COMBO 1 Adapter with sharp objects.
- Do not insert foreign objects into any part of the COMBO 1 Adapter.
- Ensure that the COMBO 1 charging station's charge cable and the COMBO 1 Adapter do not obstruct pedestrians or other vehicles or objects.
- Use of the COMBO 1 Adapter may affect or impair the operation of any medical or implantable electronic devices, such as an implantable cardiac pacemaker or an implantable cardioverter defibrillator. Check with the electronic device manufacturer concerning the effects that charging may have on such electronic device before using the COMBO 1 to gb/t Adapter.
- Do not use cleaning solvents to clean the COMBO 1 to gb/t Adapter.
- If you have any questions or concerns about your COMBO 1 to gb/t Adapter, contact the local reseller.

SPECIFICATIONS 规格参数

Use only to connect the charging cable on a COMBO 1 charging station to a GB/T vehicle that has been enabled for DC charging. The location of the charge port will vary depending on your vehicle model. Refer to your GB/T vehicle's owner documentation for the location of the charge port and more detailed charging instructions.

Current 电流	200ADC MAX CONT
Voltage 电压	150 - 1000 VDC
Enclosure Rating 防护	IP55
Operating 运行温度 Temperature	-22°F to 122°F -30°C to +50°C
Storage 存储温度 Temperature	-40°F to +185°F -40°C to +85°C
Packing size 包装尺寸	(L*W*H)
Weight 重量	(kg/pound)

*Full current may not be available when operating at extreme temperatures. 在极端温度下，无法满电流运行



CAUTION: Do not operate or store the COMBO 1 adapter in temperatures outside the ranges listed above. 请不要存储在超过规定温度范围的环境下

CHARGING TIME 充电时间

Charging times vary based on the power and current available from the charging station, subject to various conditions. Charge time also depends on ambient temperature and the vehicle's Battery temperature. If the Battery is not within the optimal temperature range for charging, the vehicle will heat or cool the Battery before charging begins.

For the most up-to-date information on how long it takes to charge your GB/T vehicle manufacturer website for more information.

该产品仅适用于美标直流充电桩给国标车进行直流快速充电。不同品牌的国标车辆的直流充电口位置不一定相同，请参照具体的国标车辆品牌的车主使用手册，找到相应的直流充电口，并了解其充电流程。

充电时长取决于充电桩可用功率和电流，受各方面的因素影响。充电时间亦可能受车辆电池温度影响：车辆电池温度过高或者过低，都有可能对充电电流进行限制，甚至不允许充电启动。车辆会对动力电池进行加热或者冷却后，才允许开始充电。详细的充电性能参数信息，请查询阁下购买的国标车辆官方网站公布的信息。

PLUGGING IN 插枪

请阁下特别关注使用该装置前，注意检查是否有破损或者结构不完整的地方。



CAUTION: Always inspect the COMBO 1 to GB/T adapter for damage prior to each use.

- 1 To open your DC charge port on your GB/T vehicle,
Turn off dashboard and place on "P" gear.
- 2 Attach the COMBO 1 inlet to the end of the charging station's charge cable by lining up the adapter with the charge cable and pushing until it snaps into place.
打开国标车的充电口，同时确保车辆仪表盘屏幕等熄匙关闭
确认行车挡位挂置于驻车档P档，手刹或者电子脚刹等处于工作状态

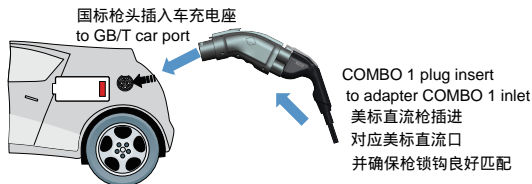
注意：美标枪的锁钩需要完美的锁住充电座的锁止机构上



NOTE: The adapter has "keyed" slots that line up with corresponding tabs on the charge cable.

- 3 Plug the GB/T plug into your GB/T vehicle, and operate Combo 1 charging station when indicate 'plug in', then plug in Combo 1 plug into Combo 1 inlet.

国标枪头先插入车端座，然后操作充电桩界面提示插枪后，将美标直流枪插入该装置的美标直流口，确保稳固后操作充电桩开始充电。



- 4 Follow the instructions on the COMBO 1 charging station to start the charging session.

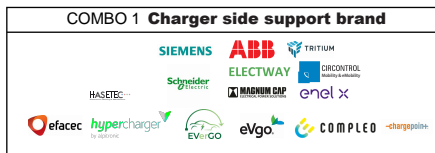
NOTES: 按照充电桩的充电操作流程，开启充电

- Steps 2 and 3 can not be done in reverse order.
- The operation of the COMBO 1 charging station will vary depending on the station's manufacturer. For details, refer to the COMBO 1 charging station's instructions.

步骤2和3可以顺序相反操作，不同品牌充电桩的充电流程不同，具体按照实际情况

Available Brand of car and charging station

支持使用的车辆品牌和充电桩的品牌



品牌兼容范围不断更新中，以上品牌仅代表进行过有限的测试，不能保证绝对稳定或者没问题

内部电池使用注意事项

使用前请检查内部供电的可循环充电的18650电池正负极是否放置正确，并长按电源按钮，观察电源指示灯是否闪烁，若电源指示灯不亮，则有可能内部供电电池能量不足，需要外接充电器或者通过

本装置的Mini-USB口对内部电池进行充电。本装置在用于经过充电桩给电动车辆进行直流充电的过程中，不消耗内部电池能量，并且可以给内部电池进行浮充。如果本装置经常使用，一般不用额外进行内部电池的补电。

如果无法找到18650电池或者18650电池断电，可以使用外接5V充电宝进行供电，并进行正常充电操作步骤。

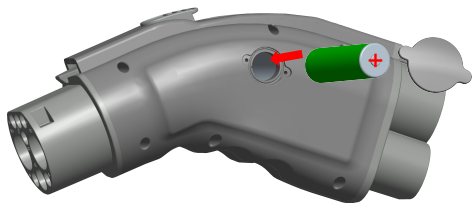
Inner cell instruction

before you use our adapter, kindly check inner 18650 cell if its '+' and '-' locate in the correct position. And press the power supply button, to see if the indication lamp if flashing, if the lamp not light, maybe its inner cell with not enough energy, need outer cell charger add its energy or via our adapter mini-USB port to recharging.

when this adapter working on charging a EV, it can obtain energy from charging station, so if you use it frequently so often, it will no need to add energy too often.

If you can't found 18650 cell in local area, you can use a 5V powerbank to supply this adapter, and proceed the normal standard charging step.

由于国际快递不允许携带电池发货，我们标准产品不配电池



FIRMWARE UPDATE 固件升级

please make sure your power bank full with energy!
首先确认你的充电宝电量充足



micro USB port 迷你USB接口

Open the micro USB port
cover, and insert the multi USB
cable into the USB port on adapter
打开USB的防水胶塞, 插入随配多功能USB线
的插头到转换器对应的迷你USB接口

USB 5V supply port
USB电源接口

5V power bank cable
plug in supply
port, USB flash
insert into USB
data interface

U盘插入数据接口
充电宝插入电源接口

multi-USB cable
多用途USB数据电源线

USB data port
USB数据接口



通用智能手机移动
充电宝
smartphone 5V
power bank

after 30~60s, the indication lamp flashing 2~3 times, update successful.
remove all the USB cable and supply.

Note: FAT format empty USB disc with 16G or less capacity

等待约1分钟后,
指示灯闪烁2~3下,
固件更新成功。移除充电宝
及U盘

注: U盘格式须为 FAT 格式
容量应小于16G

OUTPUT troubleshooting DATA 调试报文输出



please make sure your
power bank full with energy!

plug GB/T connector into
car charge port and COMBO 1
plug into adapter's COMBO 1 inlet

确保充电宝电量充足
国标侧插入车端国标座,
美标枪插入转换器美标座



充电状态指示灯
charge status indication lamp

gb/t hatch
国标枪锁钩

unlock & stop button
锁/解锁按钮

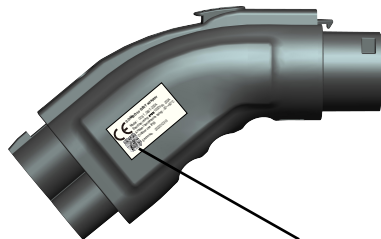


Do all step as
"firmware update"
waiting at least 60 seconds

until the lamp flash 2~3 times.
执行更新固件的所有步骤, 然后等待
60秒左右, 直到指示灯闪烁2~3次

copy the output log from
USB flash and send email
to the reseller and waiting
further feedback
从U盘拷贝出报文信息文件发
电邮给当地代理经销商, 等候回音

WARRANTY RULES



this QR code is for scan
your warranty information

售后服务保修信息二维码

我们凭保修二维码进行销售地区和功能版本以及保修时限等的信息甄别，
请妥善保管好您的保修二维码标签，如若损毁，我们不承担有关的保修责任！

保修条款

accessories



Multi-USB cable(standard)
多用途USB数据电源线

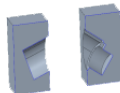


USB flash(optional)
U盘（选配）



User manual
用户说明书

EPE buffer
珍珠棉



standard 18650 cell
(optional)
18650可充电电池（选配）



⑥ carton packing box
包装纸箱



UNPLUGGING

When charging is complete:

- 1 Press the unlock hatch button of the adapter, pull the adapter out of the GB/T DC charge port,



CAUTION: If you unplug the charging station's cable from the adapter when the adapter is still plugged into the vehicle, make sure the adapter does not fall onto the vehicle and cause damage.

- 2 Push the charge port door closed.
- 3 Unplug the adapter from the charging station and store it in an appropriate location.

STATUS LIGHT

Under normal conditions when the COMBO 1 adapter is receiving power from the charging station, its green LED lights up. During charging, the LED green on.

RESOLVING FAULTS

If your GB/T vehicle fails to charge when using the COMBO 1 adapter, check the display on your GB/T vehicle for information about any error that may have occurred. Always check the status of the charging station.

Although the COMBO 1 adapter is designed to work with all COMBO 1 charging stations, it may be incompatible with some models.

Because continuous improvement is an ongoing goal, and is necessary to ensure compatibility with as many models of COMBO 1 stations as possible, both present and future, We reserves the right to make product modifications at any time. As a result, your adapter may require an occasional firmware update. Firmware updates are performed by USB port.

QUESTIONS?

For information for your region, please contact the seller.

NOTE: When reporting a charging problem, please provide the brand, model, and location of the COMBO 1 charging station and brand of your car.