



CHAdeMO to GB/T ADAPTER

OWNER'S MANUAL

COMMUNICATIONS REGULATIONS

RADIO AND TELEVISION INTERFERENCE

The equipment described in this manual can generate and radiate radio-frequency energy. If it is not installed and used properly, and in accordance with our instructions, it can interfere with radio and television reception.

COMPLIANCE

The CHAdeMO Adapter complies with the following European Union directives: Low Voltage Directive (LVD) 2006/95/EC and Electromagnetic Compatibility (EMC) Directive 2004/108/EC.

ERRORS OR OMISSIONS

To communicate any inaccuracies or omissions in this manual, please send an email to your local reseller.

SAVE THESE IMPORTANT SAFETY INSTRUCTIONS. This document contains important instructions and warnings that must be followed when using the CHAdeMO to gbt adapter.



WARNINGS

- Read this document before using the CHAdeMO Adapter. Failure to follow any of the instructions or warnings in this document can result in *fire, electrical shock, serious injury or death*.
- The CHAdeMO Adapter is designed only for charging a gb/t vehicle (China charging standard car). Do not use it for any other purpose or with any other vehicle or object. The CHAdeMO Adapter is intended only for vehicles that do not require ventilation during charging.
- Do not use the CHAdeMO Adapter if it is defective, appears cracked, frayed, broken or otherwise damaged, or fails to operate.
- Do not attempt to open, disassemble, repair, tamper with, or modify the CHAdeMO Adapter. The adapter is not user serviceable. Contact the reseller for any repairs.
- Do not disconnect the CHAdeMO Adapter while charging the vehicle.
- Do not use the CHAdeMO Adapter when either you, the vehicle, the charging station, or the CHAdeMO Adapter is exposed to severe rain, snow, electrical storm or other inclement weather.
- When using or transporting the CHAdeMO Adapter, handle with care and do not subject it to strong force or impact or pull, twist, tangle, drag or step on the CHAdeMO Adapter to protect from damage to it or any components.
- Protect the CHAdeMO Adapter from moisture, water and foreign objects at all times. If any exist or appear to have damaged or corroded the CHAdeMO Adapter, do not use the CHAdeMO Adapter.
- Do not touch the CHAdeMO Adapter's end terminals with sharp metallic objects, such as wire, tools or needles.



WARNINGS Cont'd

- If rain falls during charging, do not allow rainwater to run along the length of cable and wet the CHAdeMO Adapter or the vehicle's charging port.
- If the CHAdeMO charging station's charge cable is submerged in water or covered in snow, do not insert the CHAdeMO Adapter's plug. If, in this situation, the CHAdeMO Adapter's plug is already plugged in and needs to be unplugged, stop charging first, then unplug the CHAdeMO Adapter's plug.
- Do not damage the CHAdeMO Adapter with sharp objects.
- Do not insert foreign objects into any part of the CHAdeMO Adapter.
- Ensure that the CHAdeMO charging station's charge cable and the CHAdeMO Adapter do not obstruct pedestrians or other vehicles or objects.
- Use of the CHAdeMO Adapter may affect or impair the operation of any medical or implantable electronic devices, such as an implantable cardiac pacemaker or an implantable cardioverter defibrillator. Check with the electronic device manufacturer concerning the effects that charging may have on such electronic device before using the CHAdeMO to gb/t Adapter.
- Do not use cleaning solvents to clean the CHAdeMO to gb/t Adapter.
- If you have any questions or concerns about your CHAdeMO to gb/t Adapter, contact the local reseller.

SPECIFICATIONS

Use only to connect the charging cable on a CHAdeMO charging station to a GB/T vehicle that has been enabled for DC charging. The location of the charge port will vary depending on your vehicle model. Refer to your GB/T vehicle's owner documentation for the location of the charge port and more detailed charging instructions.

Current	125ADC MAX CONT
Voltage	100 - 500 VDC
Enclosure Rating	IP55
Operating Temperature	-22°F to 122°F -30°C to +50°C
Storage Temperature	-40°F to +185°F -40°C to +85°C

*Full current may not be available when operating at extreme temperatures.




CAUTION: Do not operate or store the CHAdeMO adapter in temperatures outside the ranges listed above.

CHARGING TIME

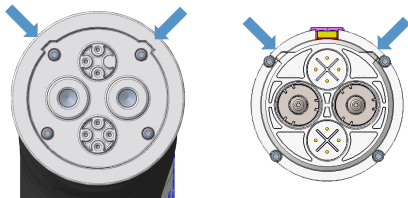
Charging times vary based on the power and current available from the charging station, subject to various conditions. Charge time also depends on ambient temperature and the vehicle's Battery temperature. If the Battery is not within the optimal temperature range for charging, the vehicle will heat or cool the Battery before charging begins.

For the most up-to-date information on how long it takes to charge your GB/T vehicle manufacturer website for more information.

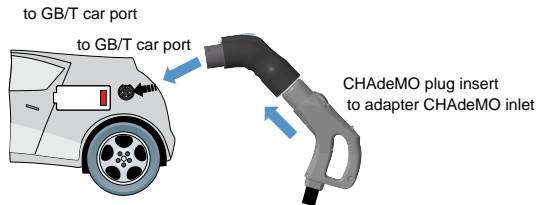
PLUGGING IN

 **CAUTION:** Always inspect the CHAdeMO to GB/T adapter for damage prior to each use.

- 1** To open your DC charge port on your GB/T vehicle, Turn off dashboard and place on "P" gear.
- 2** Attach the CHAdeMO inlet to the end of the charging station's charge cable by lining up the adapter with the charge cable and pushing until it snaps into place.
NOTE: The adapter has "keyed" slots that line up with corresponding tabs on the charge cable.



- 3** Plug the GB/T plug into your GB/T vehicle, and make sure insert 100% enough and hatch lock fit firmly. and wait for the vehicle detect the GB/T plug already "Plug in".

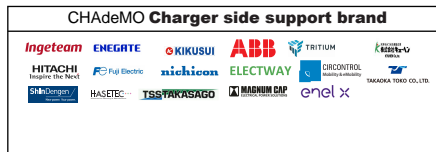


- 4** Follow the instructions on the CHAdeMO charging station to start the charging session.

NOTES:

- Steps 2 and 3 can be done in reverse order.
- The operation of the CHAdeMO charging station will vary depending on the station's manufacturer. For details, refer to the CHAdeMO charging station's instructions.

Available Brand of car and charging station

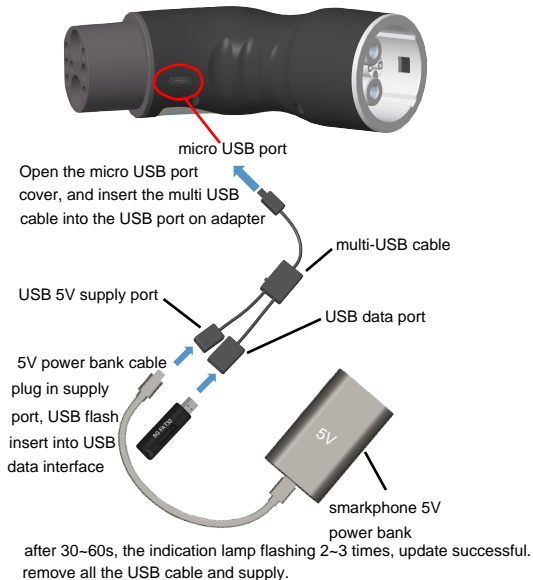


CHAdEMO plug detect

some brand need use extra 5V cellpack for supply 30~60 seconds to let charging station detect the "plug in" detection.

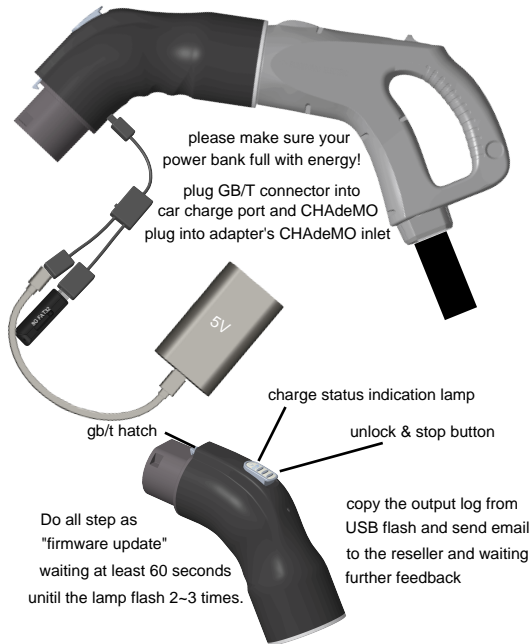
FIRMWARE UPDATE

please make sure your power bank full with energy!



Note: FAT format empty USB disc with 16G or less capacity

OUTPUT troubleshooting DATA



WARRANTY RULES



accessories

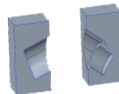


Multi-USB cable(standard)



USB flash(optional)

EPE buffer



User manual

carton packing box

UNPLUGGING

When charging is complete:

- 1 Press the unlock hatch button of the adapter, pull the adapter out of the GB/T DC charge port,



CAUTION: If you unplug the charging station's cable from the adapter when the adapter is still plugged into the vehicle, make sure the adapter does not fall onto the vehicle and cause damage.

- 2 Push the charge port door closed.
- 3 Unplug the adapter from the charging station and store it in an appropriate location.

STATUS LIGHT

Under normal conditions when the CHAdeMO adapter is receiving power from the charging station, its green LED lights up. During charging, the LED green on.

RESOLVING FAULTS

If your GB/T vehicle fails to charge when using the CHAdeMO adapter, check the display on your GB/T vehicle for information about any error that may have occurred. Always check the status of the charging station.

Although the CHAdeMO adapter is designed to work with all CHAdeMO charging stations, it may be incompatible with some models.

Because continuous improvement is an ongoing goal, and is necessary to ensure compatibility with as many models of CHAdeMO stations as possible, both present and future, We reserves the right to make product modifications at any time. As a result, your adapter may require an occasional firmware update. Firmware updates are performed by USB port.

QUESTIONS?

For information for your region, please contact the seller.

NOTE: When reporting a charging problem, please provide the brand, model, and location of the CHAdeMO charging station and brand of your car.