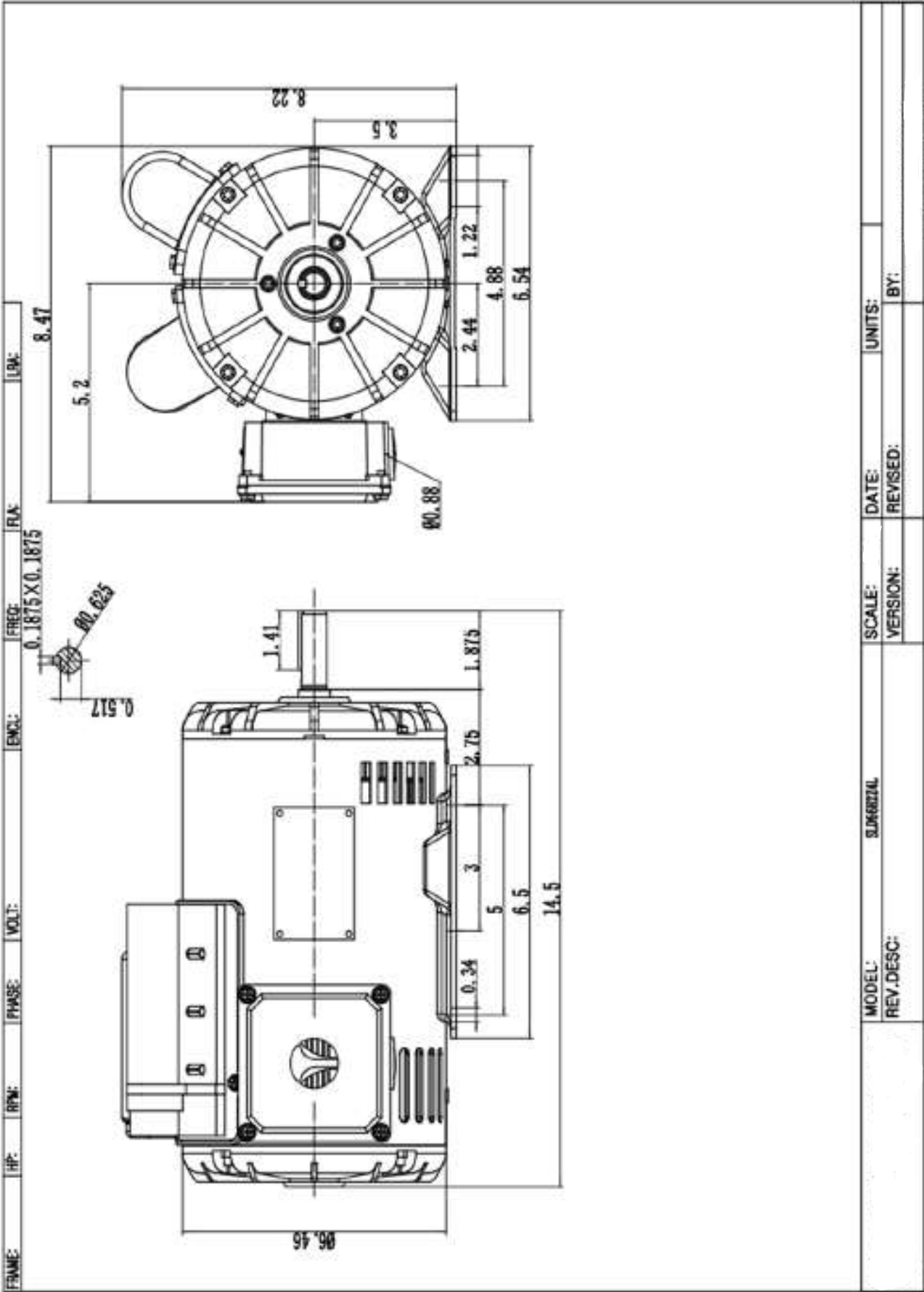


## Technical Data Sheet

Model **SLD 56H2Z4L**

Housing material		Roller Steel
Phase		Single
Frame size		56H
Power(60Hz)	kW	1.50
Power(60Hz)	HP	2.00
Current(A)110V		18.00
Current(A)220V		9.00
Speed(60Hz)	(r/min)	1740
Efficiency	Eff.100%	0.80
Power factor cosφ	100% load	0.95
Service duty		S1
Service Factor		1.15
Enclosure		ODP
Start Capacitor		500uf/165V
Run Capacitor		100uf/250V
Standard		NEMA
Ambient Temp.		-20°C ~ +40°C
Maximum altitute		1000 m above sea level

Rated torque(N.m)	8.23
Tst/Tn (Times)	2.2
Tmax/Tn (Times)	2.3
Tmin/Tn (Times)	1
Ist/In (Times)	7
Bearings type(DE)	6204
Bearings type(NDE)	6203
Cable glands	22
Temp.Rise Class	B 80K
Insulation class	F
Protection degree	IP23
Thermal protection	Without
Rotation direction	Clockwise
Balance	Half-key balanced
Cooling	IC 411
Noise dB(A)	72
Net weight(kg)	26.60
Moment of inertia kg*m <sup>2</sup>	0.055



MODEL:	SCALE:	DATE:	UNITS:
REV.DESC:	VERSION:	REVISED:	BY: