



**FENGLU ALUMINIUM**  
 E-mail: fenglu@fenglu-alu.com web-site: www.fenglu-alu.com

Customer

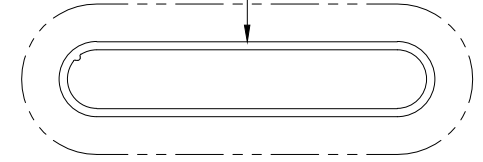
Panama (CBE)

Drawing No.

Chen nuan sen

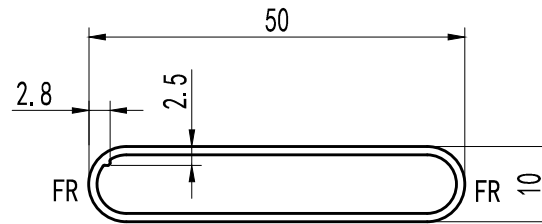
If there're any revise on the drawing,  
 please don't sign back!

grip hole for coating



1:1

Please specify exposed surface.  
 Otherwise we will consider it  
 has no exposed surface.



Some extrusion lines on the exposed  
 surface are unavoidable.

- 8. Please specify important sizes.
- 7. Break all sharp corners R0.3 .
- 6. Please specify if this profile matches with other profiles.

△ Please specify exposed surface.  
 △ Otherwise, Consider no exposed surface.

△ UNSPEC. TOLERANCES TO FOLLOW: GB/T 14846

△ FINISH:  MILL FINISH  ANODIZING  POWDER COATING

△ MATERIAL: AL ALY 6063-T5

△ STANDARD: GB/T 6892-2015

----- PRIMARY EXPOSED SURFACE

NOTES: (UNLESS OTHERWISE SPECIFIED)

SIGNATURE:

|        |                        |                  |            |                       |          |          |       |             |              |
|--------|------------------------|------------------|------------|-----------------------|----------|----------|-------|-------------|--------------|
| Area   | 119.06 mm <sup>2</sup> | Theory Weight    | 0.323 kg/m | Unspecified Thickness | 1.1 mm   | Drawn    | RUI   | Section No. | FU34561-1834 |
|        | in. <sup>2</sup>       |                  | lb/ft      |                       | in.      |          |       |             |              |
| Perimm | 111.42 mm              | Outside Diameter | Ø 50 mm    | Thickness Tolerance   | ±0.23 mm | Approved | Scale | Description |              |
|        | in.                    |                  | Ø in.      |                       | in.      |          |       |             |              |

Drawn Date 2024-01-06