

A05 Instruction Manual

Please read this instruction manual carefully before using the product and keep it properly.

Catalogue

Precautions for Use	01
Product and Accessories	02
Functional Schematic Diagram	03
Installation Instruction	04
Cartridge Replacement and Reset	06
Trouble Shooting	07
Technical Specification and Water Flow Diagram	08

Precautions for Use

Attention

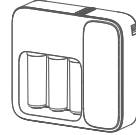
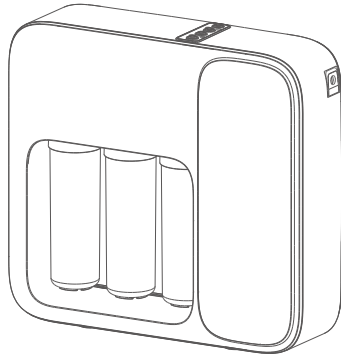
- 1.Flush and replace cartridges regularly.
- 2.Do not disassemble parts randomly, it may cause leakage or damage.
- 3.Do not use power supply with disproportional rated voltage.
- 4.Please pull the power plug off and close the feed water valve if the machine is not used a long period of time.
- 5.Do not store or expose in an environment below 0 ℃
- 6.Handle with care when discharging, moving or installing.
- 7.Suggested inlet pressure :0.1-0.4Mpa

Remind

- 1.Please turn off the feed water ball valve and cut off the source water to avoid the “water hammer phenomenon” which may lead to leakage or damage to housings and filters if go out in daytime or after the last use at night. Our company would not take the responsibility of the consequence caused by this situation.
- 2.Please cut off power and source water at once in case troubles occur and ask professional staff to repair.
- 3.Professional staff are advised to replace cartridges.
- 4.It is normal to hear vibration sound when system is producing water.

Note:Water hammer is a pressure surge or wave caused when water in motion is forced to stop or change direction suddenly. When residents in building closes the valve suddenly, a pressure wave propagates in pipeline of building.

Product and Accessories



Main Body



Three Filter Cartridges

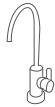
1. PCB filter (PP & CTO)
2. RO membrane
3. Post activated carbon filter(T-33)



One Accessory Box

Faucet ,Three pipes, Instruction book, Adapter, 3-way ball valve, accessory bag

Images of accessories for reference:



Faucet



3-way ball valve



**1/4"PE pipe (1.5m)
(red,blue,white) 3pcs**



Instruction book

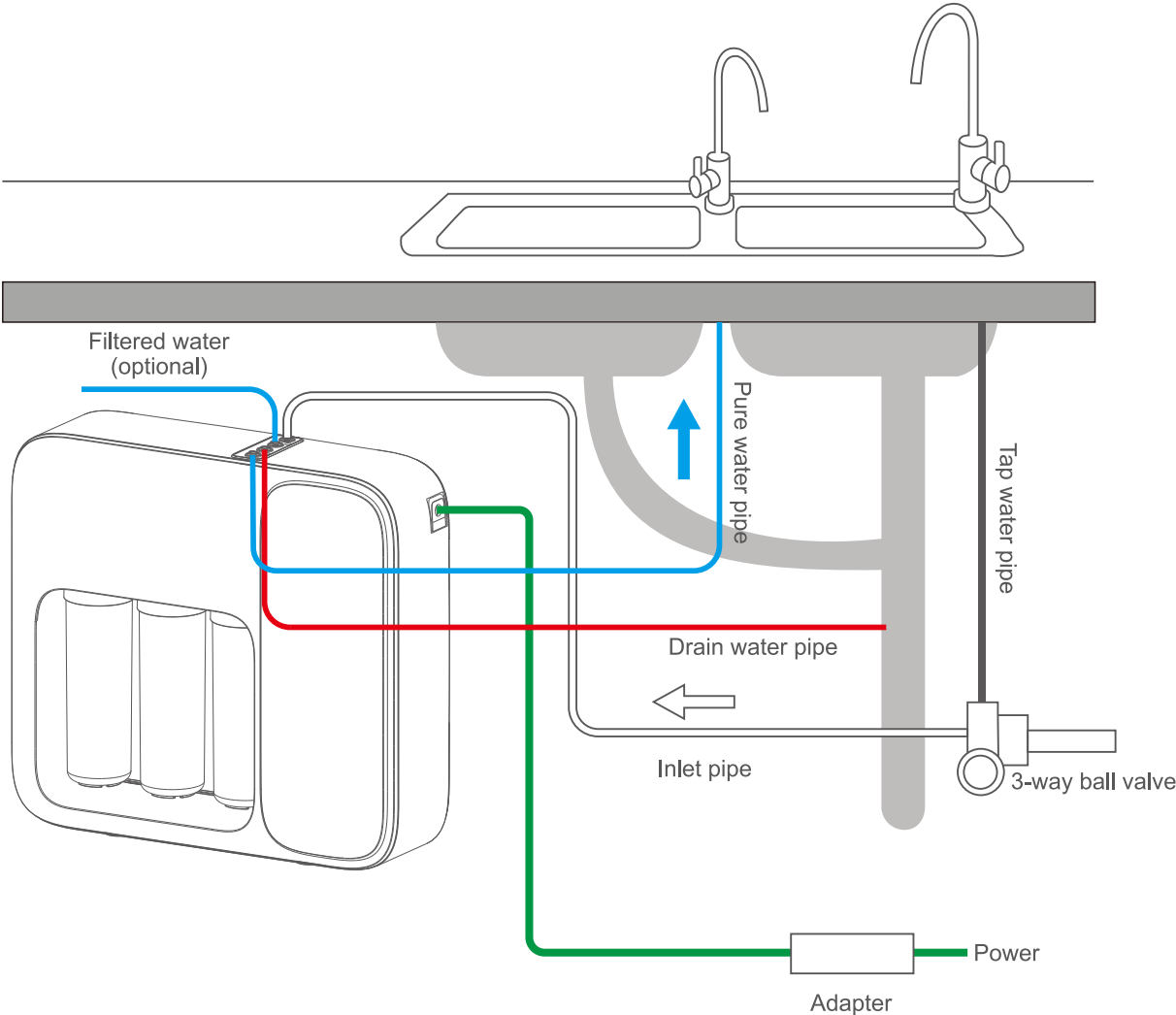


Adaptor

Note:

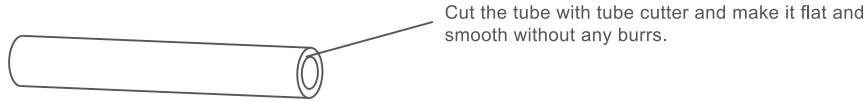
Pictures are for reference only ,subject to our available products.

Functional Schematic Diagram



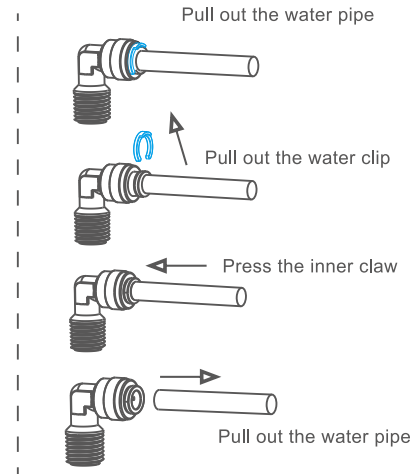
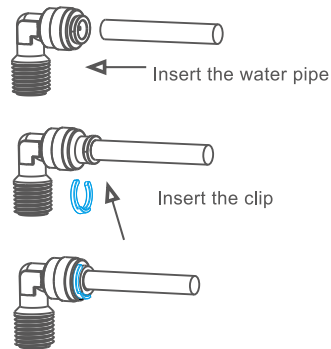
Installation Instruction

TUBE CUTTER NOTICE:



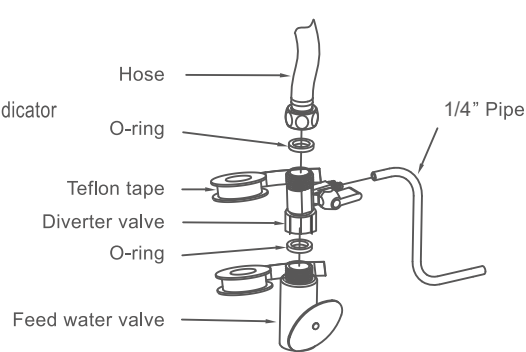
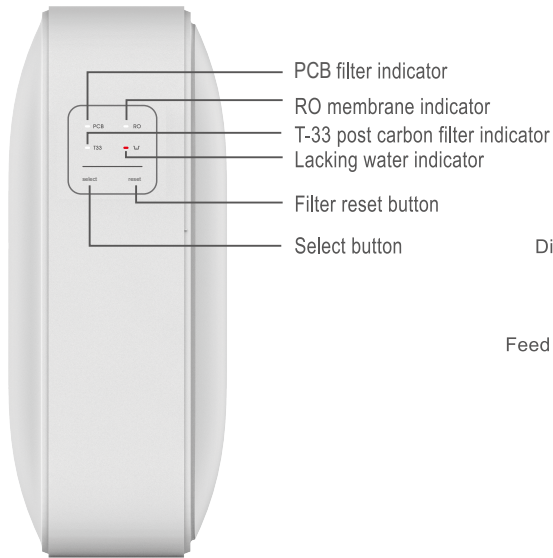
Quick Fitting

Install the water pipe

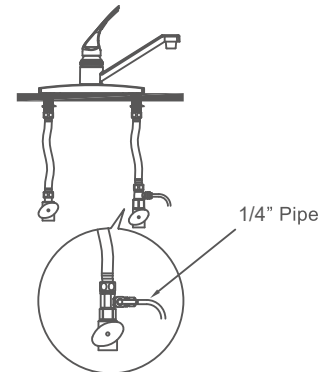


Install diverter valve as per diagram below:

1. Close the feed water valve.
2. Wrap thread of diverter valve with teflon tape.
3. Connect the diverter valve to the feed water valve and the hose(Picture 1).
4. Insert the 1/4" pipe into the diverter valve(Picture 2).
5. Open the feed water valve and the faucet to check whether connection has leakage or not.



Picture 1



Picture 2

First Use Instruction

1. Connect RO System with adapter, and buzzer rings three times. Then all the LED indicator lights start to flash, and machine will flush for 90 seconds.
2. Auto flush: After being working cumulatively for 2 hours, machine will flush 10 seconds automatically.
3. Manual flush: Keep pressing both Select Button and Reset button for 2 seconds, machine will enter the flushing mode to flush 90 seconds.

Cartridge Replacement

Cartridge Replacement Reminder

When lifespan is 20% relevant remaining, relevant LED Light will be on.

Buzzer will ring 3 times, when the machine is making water every time.

When lifespan is over, buzzer rings 5 times every time the machine is making water.

Cartridge Reset

Keep pressing the Select button for 2 seconds and it will enter Filter Reset mode. LED Indicator for PP will be on and other LED indicators will be off.

Press the Select button to choose the cartridge which needs to be replaced. Relevant Light will be on and then press the Reset button.

After reset is done, the selection mode will exit automatically if there is no operation.

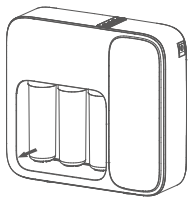
Stage	Filter Cartridge	Lifespan (for reference only)
First stage	PCB Filter	3-6 months
Second stage	RO membrane	12months
Third stage	T-33 post carbon	3-6 months

Note:

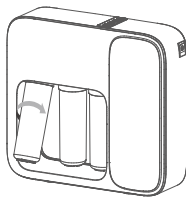
1. Actual lifespan of filters can be influenced by areas, water quality, seasons and daily water consumption, so the period of filters replacement may vary.

2. Please replace regularly.

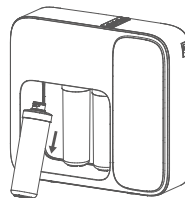
Cartridge Replacement Steps



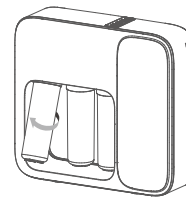
Step 1



Step 2



Step 3



Step 4

Trouble Shooting

Troubles	Cause	Solution
Water pump is out of service and system does not work	Insufficient feed water pressure	Increase feed water pressure
	No power or power failure	Power-on
	High pressure switch is out of order	Replace high pressure switch
	Pump is blocked and adapter fuse burn-out	Replace adapter and repair water pump
Water pump works but system does not work	RO membrane is blocked	Replace RO membrane
	Water pump pressure loss	Repair water pump
	Flush solenoid valve is damaged	Replace Flush solenoid valve
drain water don't stop when machine is standby	Inlet water solenoid valve damaged	Replace feed water solenoid valve
Cannot stop working when faucet is off or repetitive starting	High pressure switch is damaged	Repair or replace high pressure switch
	Check valve is damaged	Replace Check valve
Leakage	Quick fitting leaks	Check leakage reason, and change the corresponding parts.
	Filter leaks	
	Filter Cap leaks	
No water output	Quick fitting clogged	Replace parts one by one to check the cause of clog.
	Filter clogged	
	Filter Cap clogged	

Technical Specification and Water Flow Diagram

Technical Specification :

Feed water quality: Municipal tap water

Voltage& Frequency: 100~240V,50/60Hz

Working pressure: 0.5Mpa-0.7Mpa

Inlet water pressure: 0.1Mpa-0.4Mpa

Proper temperature: 5-38 C , Humidity≤90%

Purified water flow : 0.13L/Min

Water Flow Diagram :

