

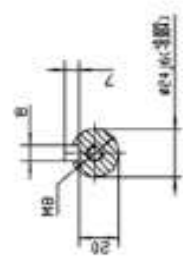
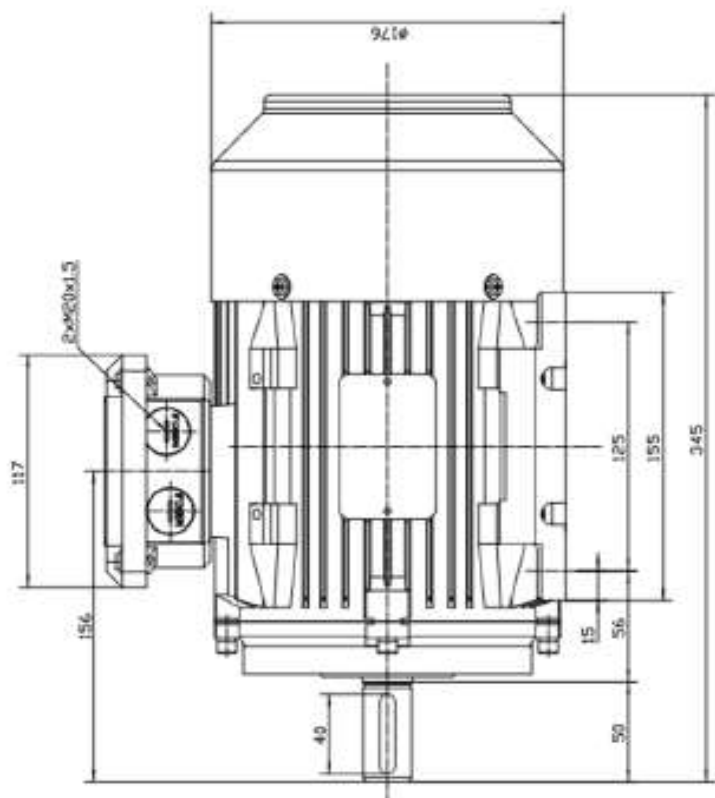
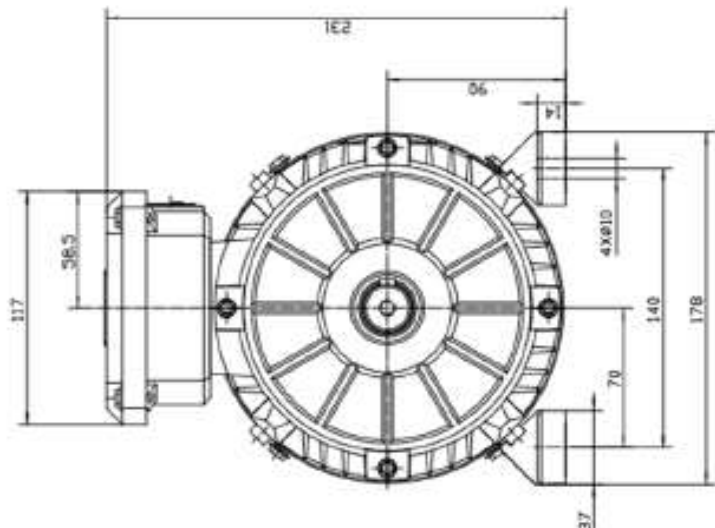
Technical Data Sheet

Model

T1C 90L-2

Housing material		Casting iron
Phase		Three
Frame size		90L
Power(60Hz)	kW	2.20
Power(60Hz)	HP	3.00
Current(A)220V	Y Y	8.97
Current(A)440V	Y	4.48
Speed(60Hz)	(r/min)	3410
Efficiency	IE1	
	Eff.100%	81.50
Power factor cosφ	100% load	0.79
Service duty		S1
Service Factor		1.15
Enclosure		TEFC
Regulations		IEC / DIN / ISO / VDE / EN
Standard		IEC 60034
Ambient Temp.		-20°C ~ +40°C
Maximum altitute		1000 m above sea level

Rated torque(N.m)	6.16
Tst/Tn (Times)	2.2
Tmax/Tn (Times)	2.3
Tmin/Tn (Times)	1.8
Ist/In (Times)	7.5
Bearings type(DE)	6205-2RZ
Bearings type(NDE)	6205-2RZ
Oil seals	25*37*7
Cable glands	1-M20*1.5
Insulation class	F
Protection degree	IP 55
Thermal protection	Without
Rotation direction	Clockwise
Balance	Half-key balanced
Cooling	IC 411
Noise dB(A)	77
Net weight(kg)	22.00
Moment of inertia kg*m ²	0.002390000



TC 90L B3		NO: CY202.A16.002	
Design	Standard	STEP FILE	1:1.5
Order	Alloy	Material	Cast Iron Motor
Modeling	Date		