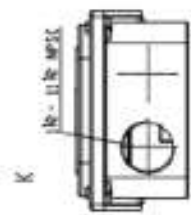
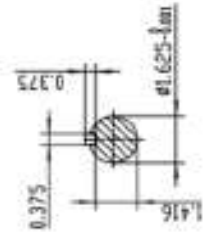
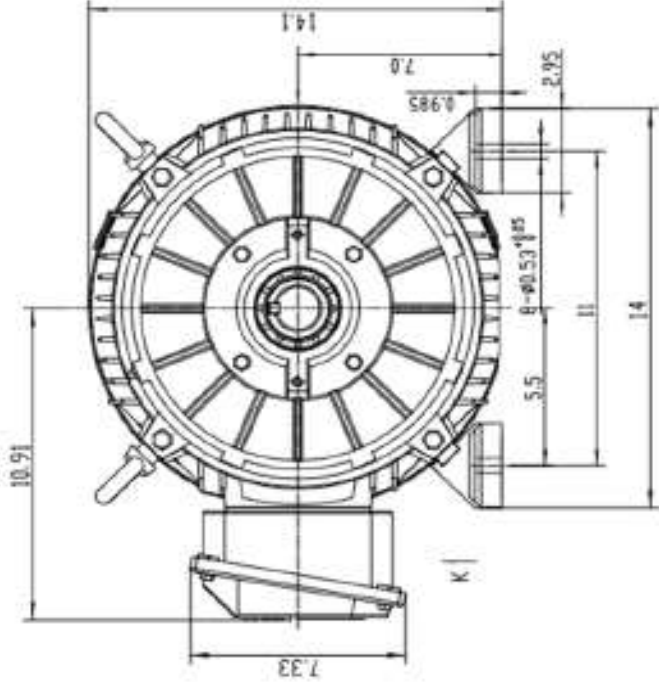
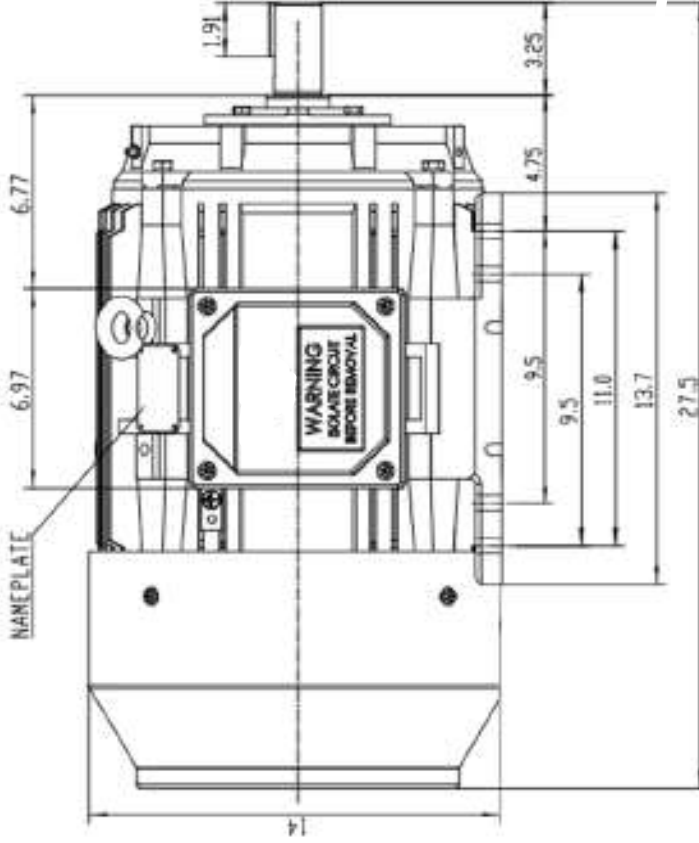


## Technical Data Sheet

Model T286TS30U2B

Housing material		Casting iron
Phase		Three
Frame size		286TS
Power(60Hz)	kW	22.00
Power(60Hz)	HP	30.00
Current(A)220V	Δ Δ	71.00
Current(A)440V	Δ	35.50
Speed(60Hz)	(r/min)	3550
Efficiency	Eff.100%	91.70
Power factor cosφ	100% load	0.90
Service duty		S1
Service Factor		1.15
Enclosure		TEFC
Design		A
Standard		NEMA MG1
Ambient Temp.		-20°C ~ +40°C
Maximum altitude		1000 m above sea level

Rated torque(N.m)	59.15
Tst/Tn (Times)	2
Tmax/Tn (Times)	2.5
Tmin/Tn (Times)	1.4
Ist/In (Times)	9
Bearings type(DE)	6311 C3
Bearings type(NDE)	6311 C3
Cable glands	1-1/2" NPSC
Insulation class	F
Protection degree	IP 55
Thermal protection	Without
Rotation direction	Clockwise
Balance	Half-key balanced
Cooling	IC 411
Noise dB(A)	94
Net weight(kg)	180.00
Moment of inertia kg*m <sup>2</sup>	0.081880000



TXC 286TS F1 NEMA TEFC		NO: CY219.A16.003	
Design	Standard	STEP MARK	1-4 SORT Cast iron Motor
Checker	Allow		
Drawing	Date		